

OpenLAB ECM XT

Content Management for the OpenLAB CDS Enabled Lab





Matthias Rupp
Labinformatics Product Specialist
Matthias_rupp@Agilent.com



OpenLAB ECM XT



OpenLAB ECM XT

-  Capture
-  Archive
-  Manage
-  Share



Files

- Reports
- PDF
- MS Office
- Images
- Drawings



Instrument Data

- Agilent LC/MS/GC
- Non Agilent (archive)

What can OpenLAB ECM XT do for you?



Capture:

Digitize, organize and secure paper records to eliminate paper reports.



Archive:

Store and secure instrument data to meet retention policies.



Manage:

Track changes to instrument data to prevent unauthorized alterations, modifications & deletions.

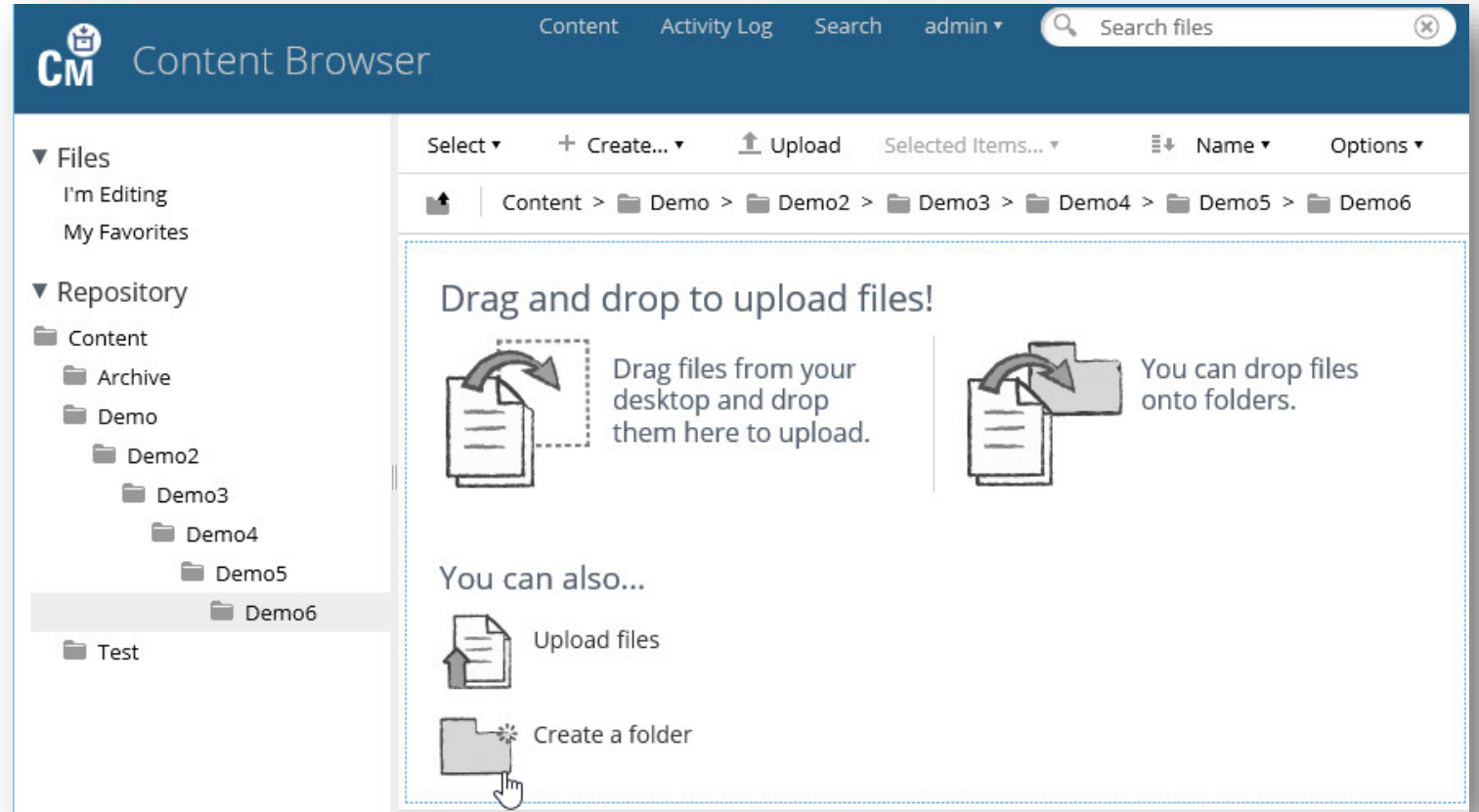


Share:

Easily find and share content to quickly navigate investigations and foster collaboration.

Content Browser

- Intuitive interface and user experience
- Drag and drop
- Access from anywhere – with any web browser
- Flexible file and folder organization



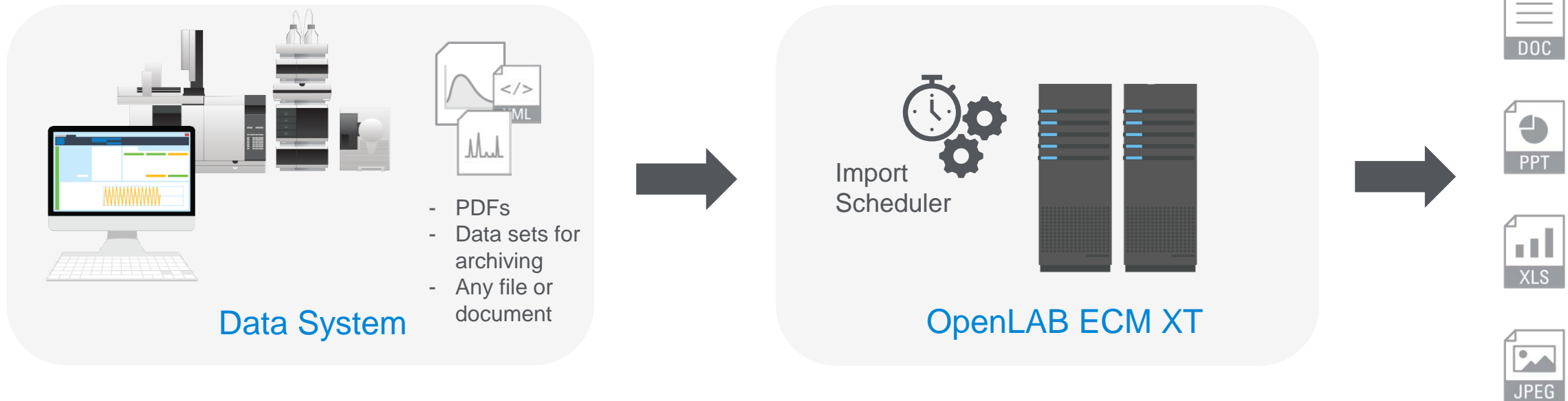
Capture and Archive content



Digitize, organize and secure paper records and other content

Import Scheduler

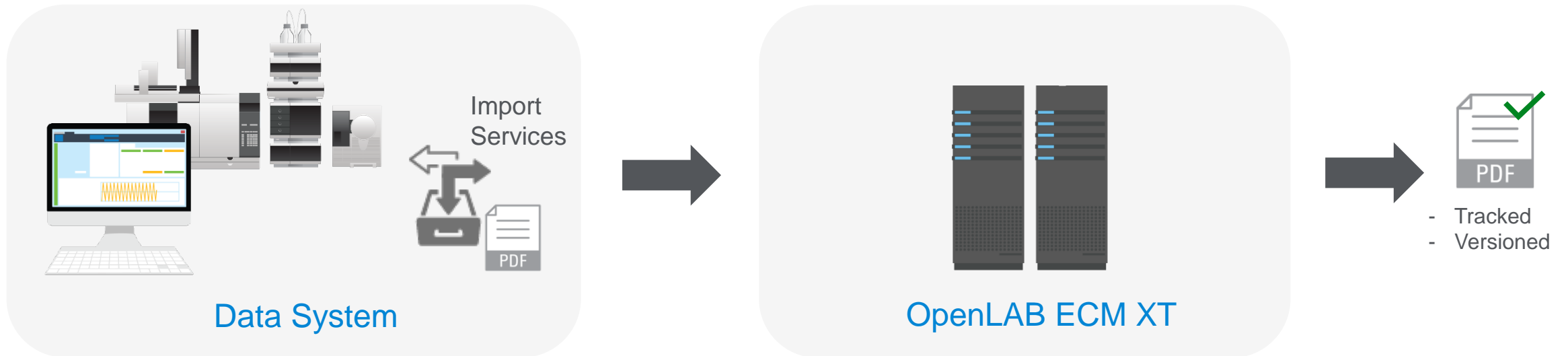
- Server based application
- Monitors and uploads based on time
- Monitors many locations from single application
- Long term archiving of data



Digitize, organize and secure paper records and other content

Import Services

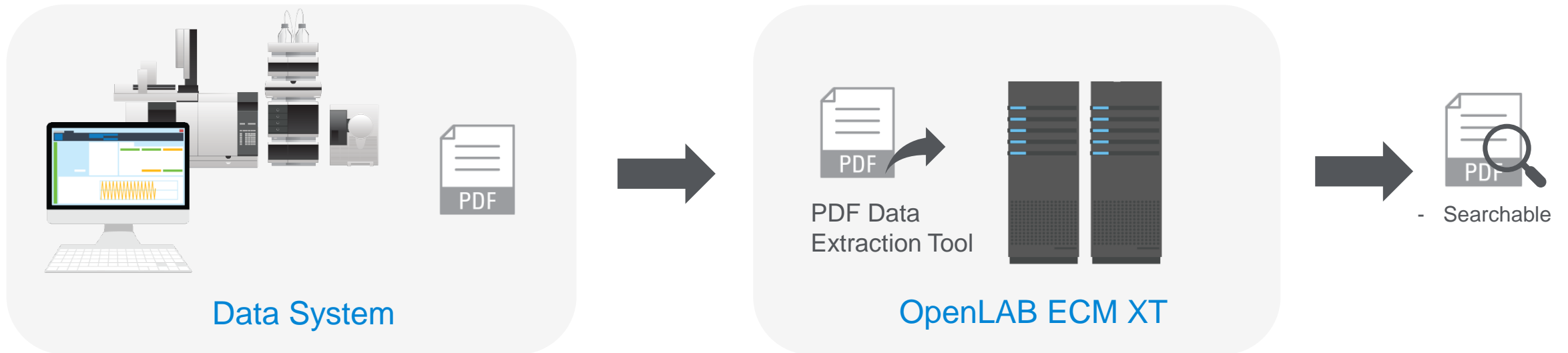
- Capture/Secure PDF report or other types of export files
- Instantaneous capture option immediately secures the record
- Well suited for integrating some small instruments
- Especially useful with automatically generated PDFs



Digitize, organize and secure paper records and other content

PDF Data Extraction – making reports searchable

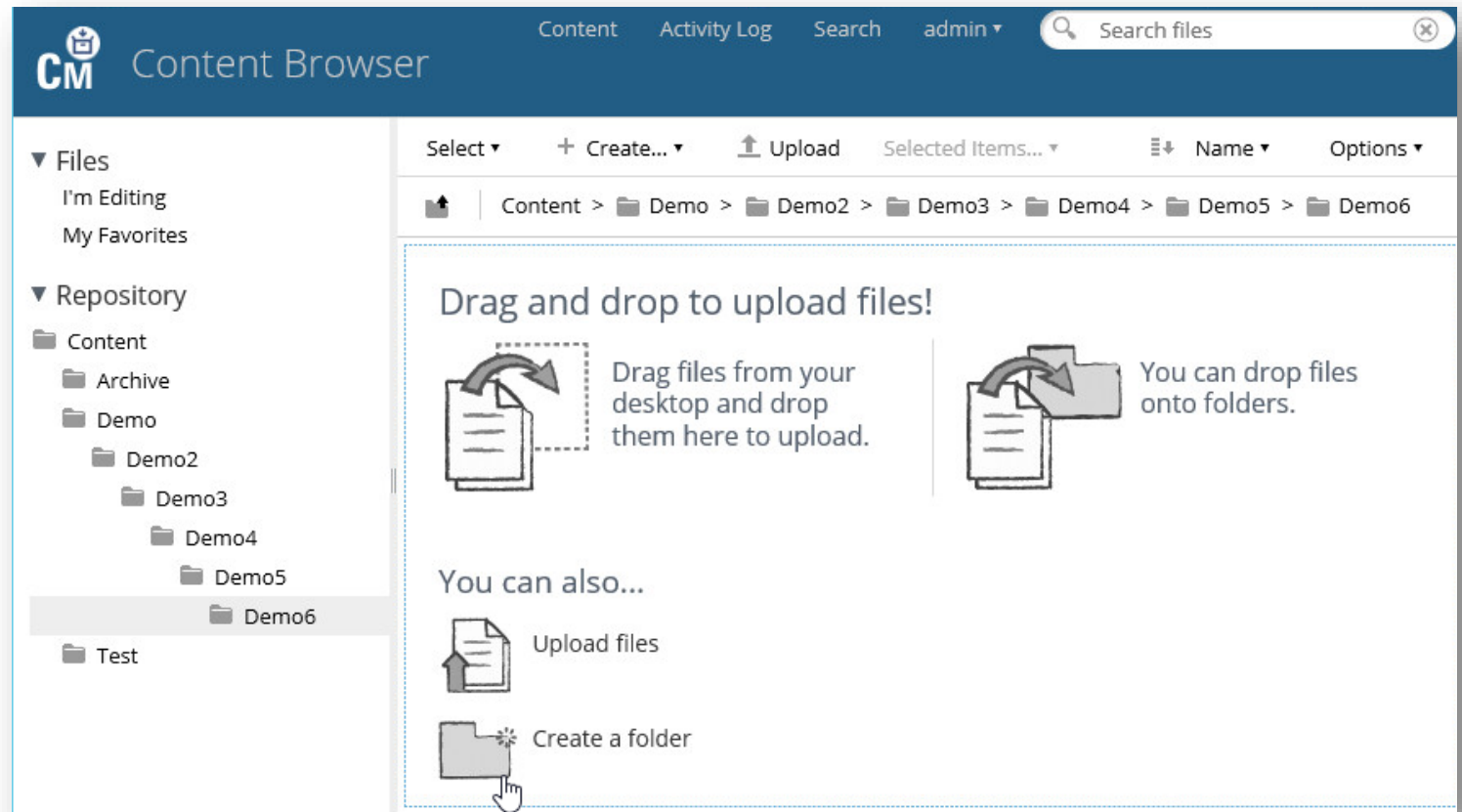
- “Extract” data from PDF to make it searchable
- Allows you to search based on anything you identify as important in report
- Examples – retention time, date of run, compound, technician name



Retention of instrument data

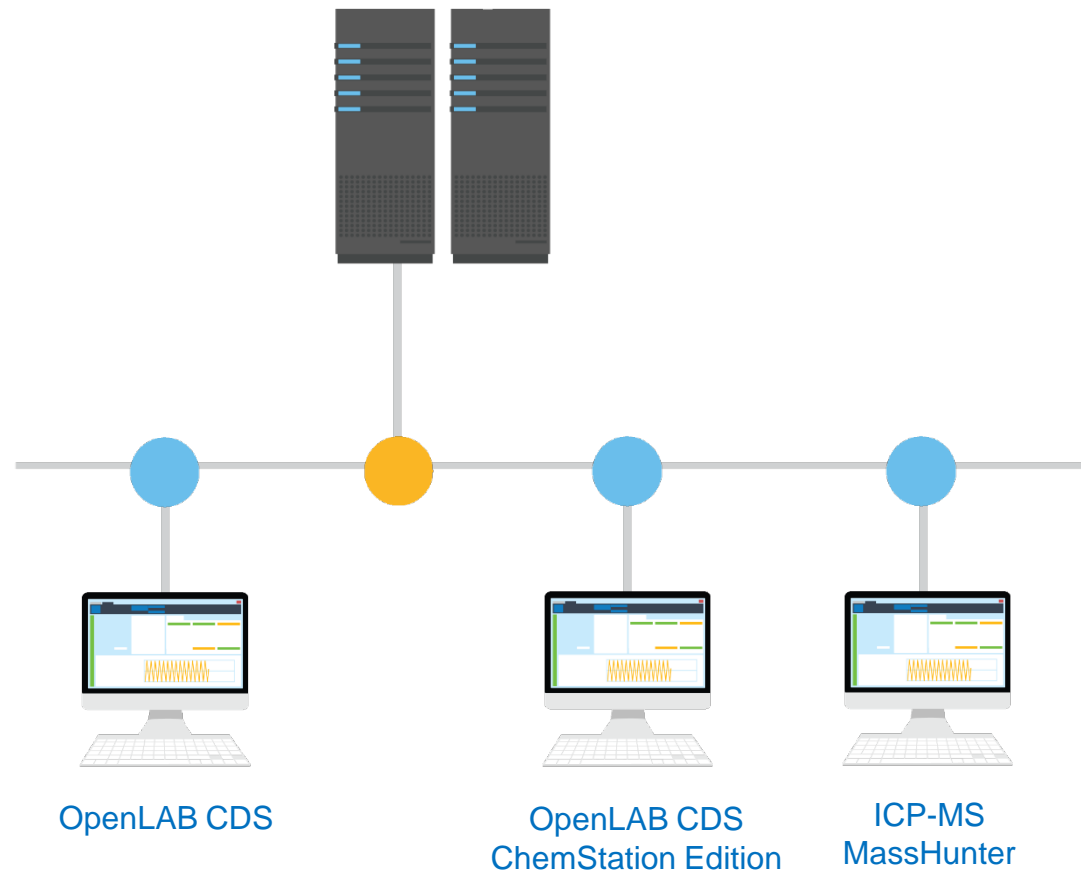
Store and secure instrument data to meet retention policies

- Drag data to an ECM XT folder when analysis, approval and reporting are complete
- Automate import into ECM XT folder on Weekly, Monthly or other schedule (Import Scheduler)
- Remote upload files from FTP site



Securing instrument data files

Secure integration with OpenLAB ECM XT



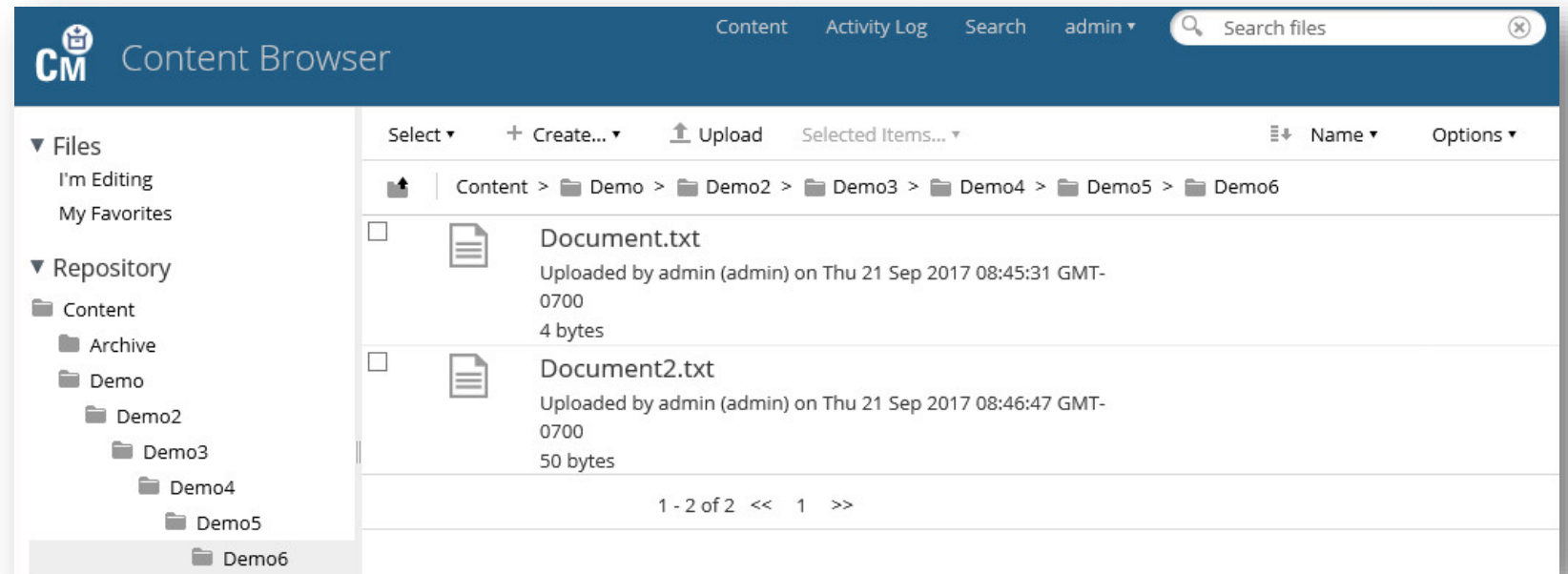
- Secured and traceable history
- Recover and review each and every version

Manage and Share

Easily find and share instrument data and digitized paper records

Just like finding a file in windows explorer – only its searchable, secure and traceable

- Access from anywhere
- Access by the right people
- Preview feature - review of data in browser
- Easy effective search
- Organize folders anyway you like
- Localization and multibyte character support

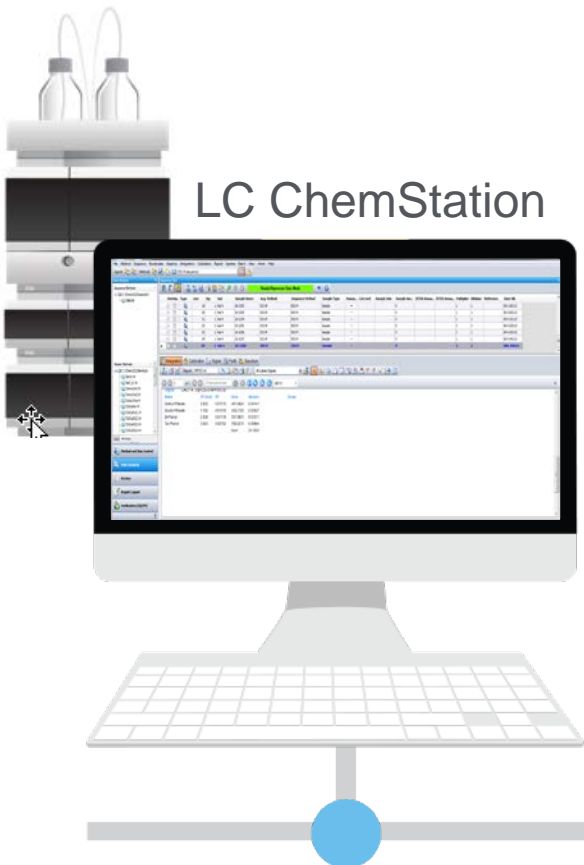


WorkShop Scenario

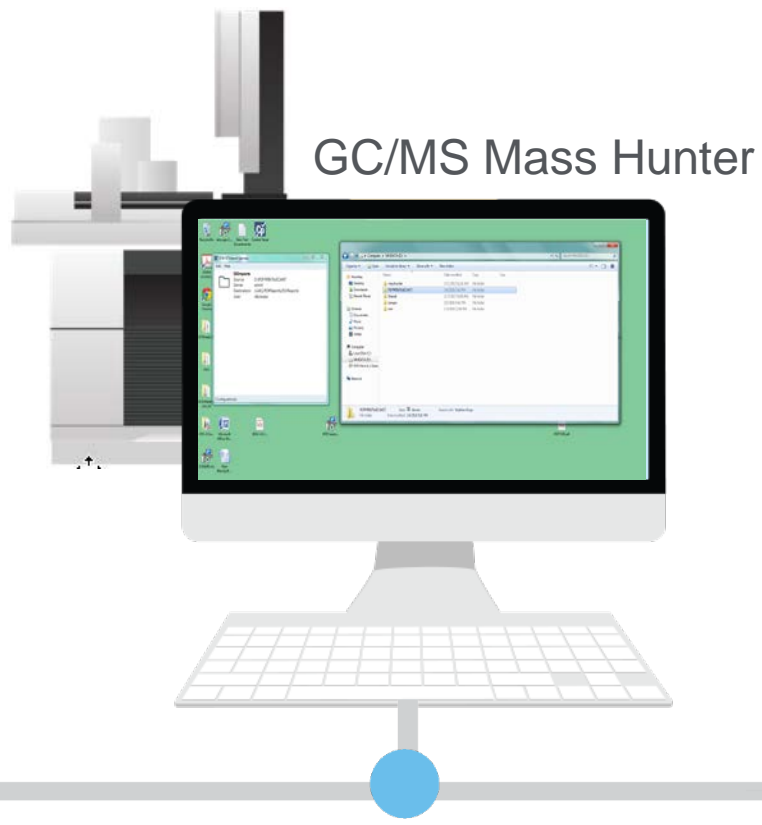
The WorkShop Lab Components



OpenLab ECM XT
Server
CDS2 Server



LC ChemStation



GC/MS Mass Hunter



CDS2 WS LC

WorkShop Scenarios

Use ECM XT / CDS2 OpenLab Server as a central repository for the Lab

- LC ChemStation Prints PDF Reports Into ECM XT
 - Local PDF Print Software creates PDF Printouts into a Shared Network location
 - Shared Networked location is monitored by ECM XT Import Services
 - PDF Files in monitored folder uploaded into ECM Predefined Destination project
 - PDF Indexing performed through User defined PDF Extraction template
 - ECM XT Indexes Specific LC Reports and makes them Searchable
- MH GC/MS Workstation Data being archived into ECM XT
 - ECM Scheduled Import Service visits MH Ws and Uploads All new/changed Data into specific Project Folder
- Creation of a PDF Template